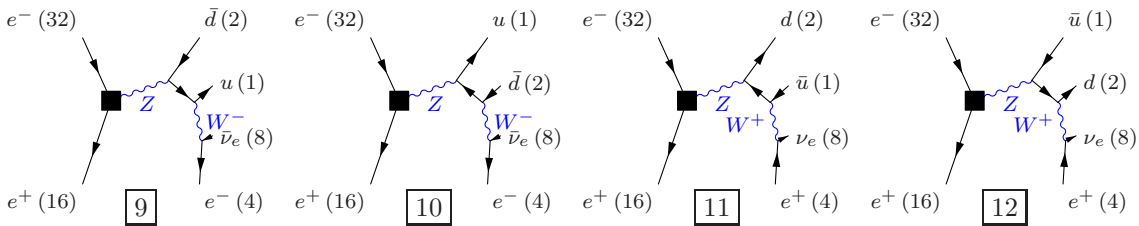
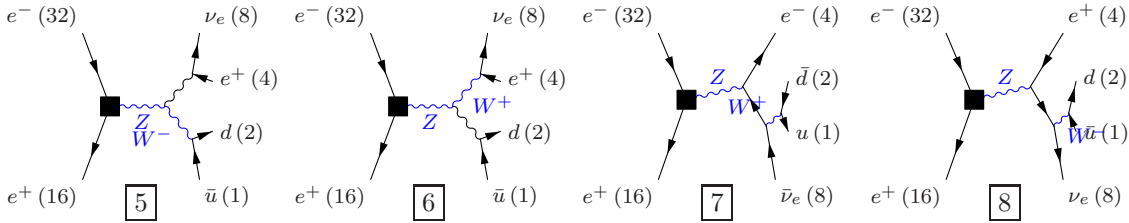
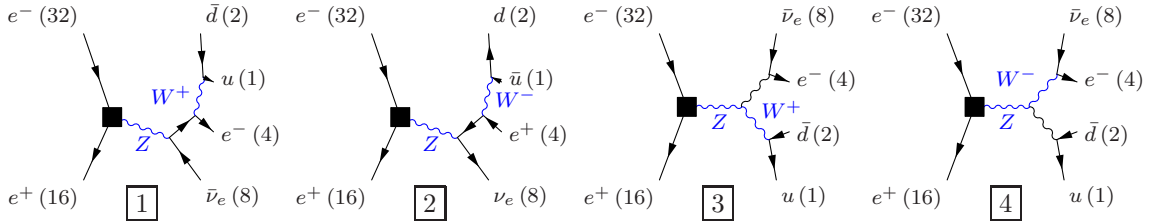


**Process:**  $sw\_s10qq$  ( $e^-e^+ \rightarrow u\bar{d}e^-\bar{\nu}_e$ ),  $e^-e^+ \rightarrow u\bar{s}e^-\bar{\nu}_e$ ,  $e^-e^+ \rightarrow u\bar{b}e^-\bar{\nu}_e$ ,  $e^-e^+ \rightarrow c\bar{d}e^-\bar{\nu}_e$ ,  $e^-e^+ \rightarrow c\bar{s}e^-\bar{\nu}_e$ ,  $e^-e^+ \rightarrow c\bar{b}e^-\bar{\nu}_e$ ,  $e^-e^+ \rightarrow \bar{u}d e^+\nu_e$ ,  $e^-e^+ \rightarrow \bar{u}s e^+\nu_e$ ,  $e^-e^+ \rightarrow \bar{u}b e^+\nu_e$ ,  $e^-e^+ \rightarrow \bar{c}d e^+\nu_e$ ,  $e^-e^+ \rightarrow \bar{c}s e^+\nu_e$ ,  $e^-e^+ \rightarrow \bar{c}b e^+\nu_e$ )

**Color code:** resonance, t-channel, radiation, infrared, collinear, external/off-shell

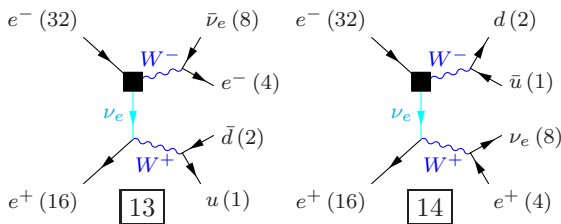
**Grove 1**

Multiplicity: 1  
Resonances: 2  
Log-enhanced: 0  
t-channel: 0



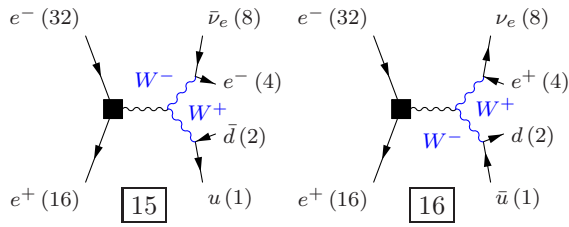
**Grove 2**

Multiplicity: 2  
Resonances: 2  
Log-enhanced: 1  
t-channel: 1



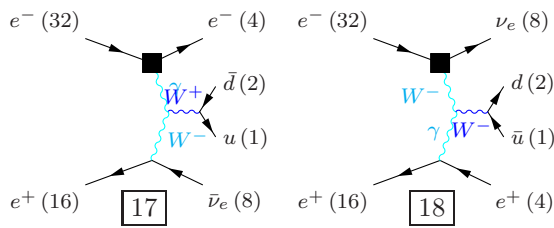
**Grove 3**

Multiplicity: 2  
Resonances: 2  
Log-enhanced: 0  
t-channel: 0



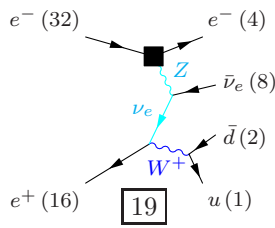
**Grove 4**

Multiplicity: 3  
Resonances: 1  
Log-enhanced: 2  
t-channel: 2



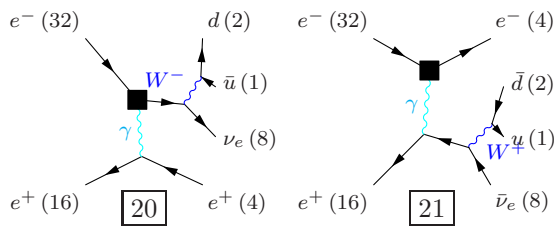
**Grove 5**

Multiplicity: 3  
Resonances: 1  
Log-enhanced: 2  
t-channel: 2



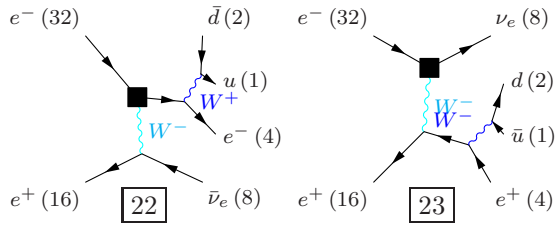
**Grove 6**

Multiplicity: 3  
Resonances: 1  
Log-enhanced: 1  
t-channel: 1



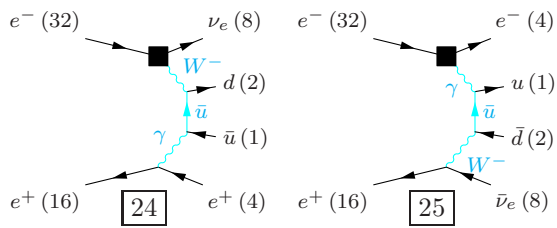
**Grove 7**

Multiplicity: 3  
Resonances: 1  
Log-enhanced: 1  
t-channel: 1



**Grove 8**

Multiplicity: 4  
Resonances: 0  
Log-enhanced: 3  
t-channel: 3



**Grove 9**

Multiplicity: 4  
Resonances: 0  
Log-enhanced: 3  
t-channel: 3

