

# WHIZARD phase space channels

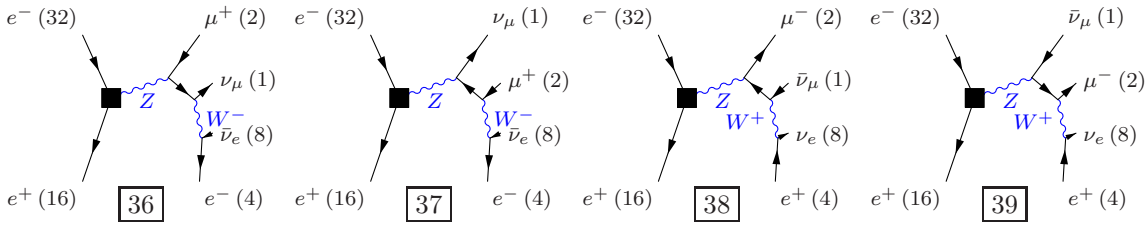
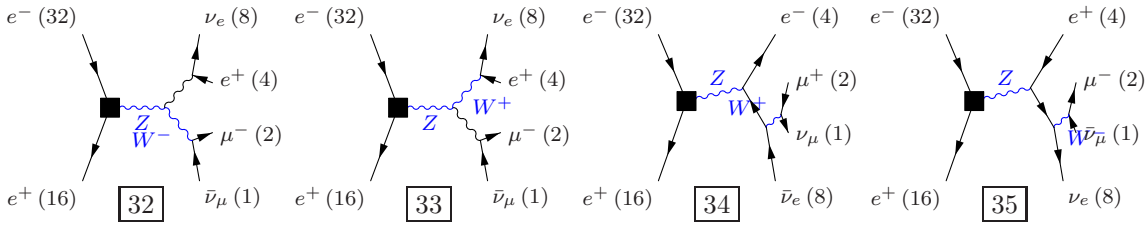
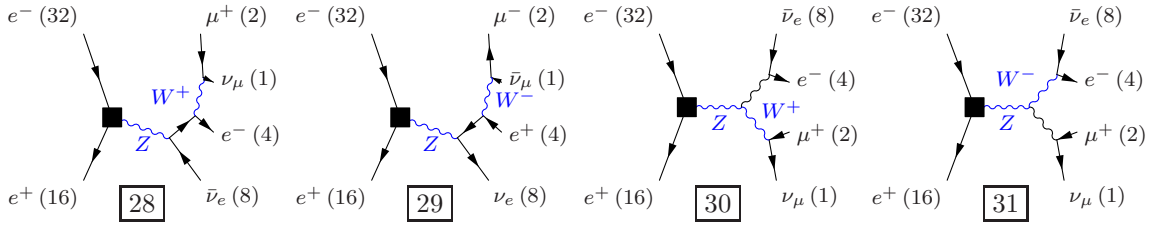
July 13, 2012

Process:  $sw_{10\mu}$  ( $e^-e^+ \rightarrow \nu_\mu\mu^+e^-\bar{\nu}_e$ ),  $e^-e^+ \rightarrow \bar{\nu}_\mu\mu^-e^+\nu_e$ )

Color code: resonance, t-channel, radiation, infrared, collinear, external/off-shell

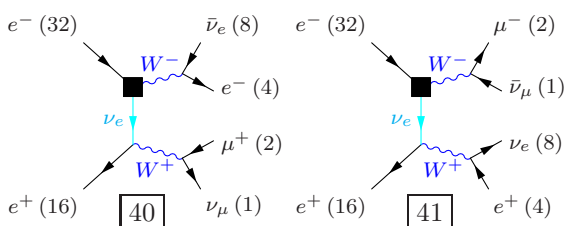
## Grove 1

Multiplicity: 1  
Resonances: 2  
Log-enhanced: 0  
t-channel: 0



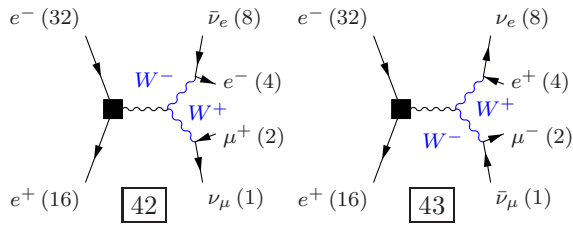
## Grove 2

Multiplicity: 2  
Resonances: 2  
Log-enhanced: 1  
t-channel: 1



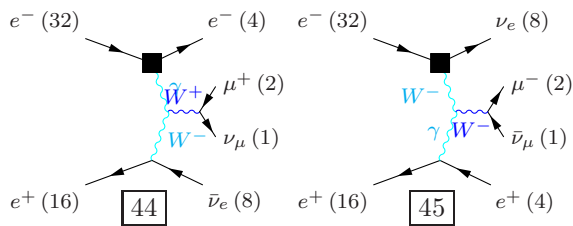
**Grove 3**

Multiplicity: 2  
Resonances: 2  
Log-enhanced: 0  
t-channel: 0



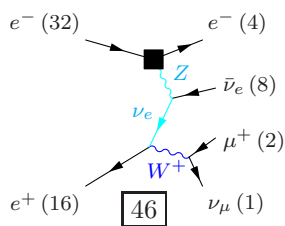
**Grove 4**

Multiplicity: 3  
Resonances: 1  
Log-enhanced: 2  
t-channel: 2



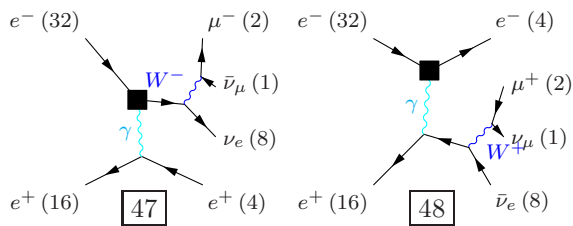
**Grove 5**

Multiplicity: 3  
Resonances: 1  
Log-enhanced: 2  
t-channel: 2



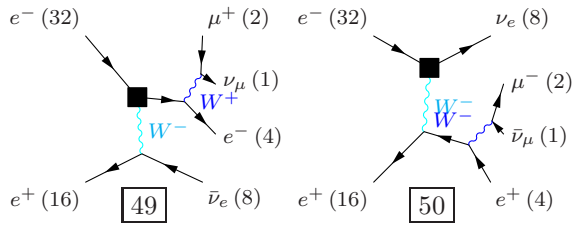
**Grove 6**

Multiplicity: 3  
Resonances: 1  
Log-enhanced: 1  
t-channel: 1



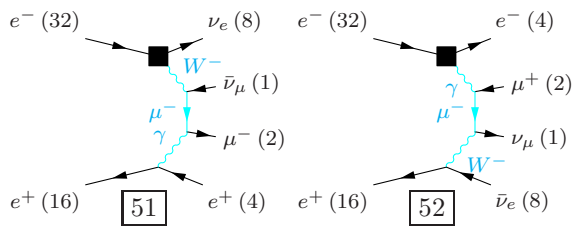
**Grove 7**

Multiplicity: 3  
 Resonances: 1  
 Log-enhanced: 1  
 t-channel: 1



**Grove 8**

Multiplicity: 4  
 Resonances: 0  
 Log-enhanced: 3  
 t-channel: 3



**Grove 9**

Multiplicity: 4  
 Resonances: 0  
 Log-enhanced: 3  
 t-channel: 3

