

# WHIZARD phase space channels

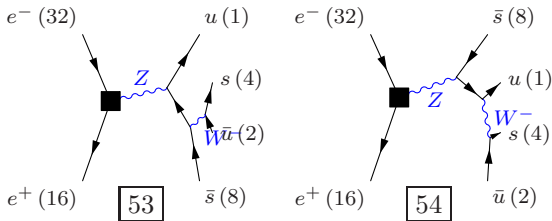
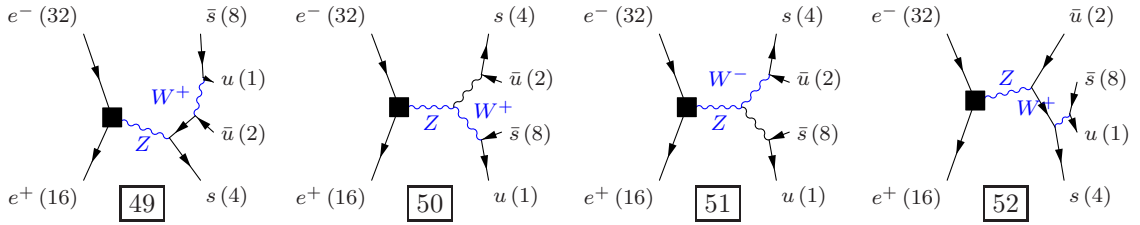
July 13, 2012

Process:  $zz\_h0uu\_notd$  ( $e^-e^+ \rightarrow u\bar{u}s\bar{s}$ ),  $e^-e^+ \rightarrow u\bar{u}s\bar{b}$ ,  $e^-e^+ \rightarrow u\bar{u}b\bar{s}$ ,  $e^-e^+ \rightarrow u\bar{u}b\bar{b}$ )

Color code: resonance, t-channel, radiation, infrared, collinear, external/off-shell

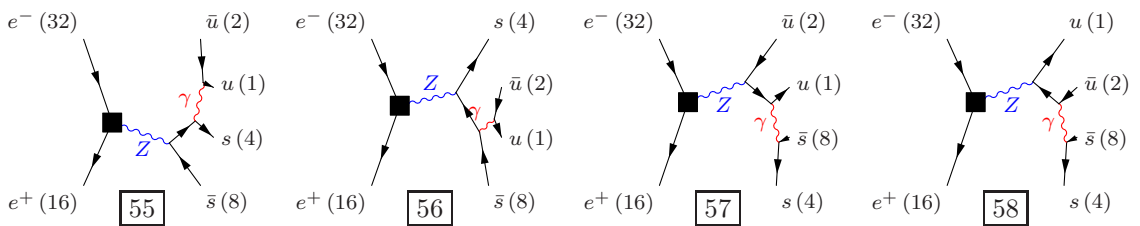
## Grove 1

Multiplicity: 1  
Resonances: 2  
Log-enhanced: 0  
t-channel: 0



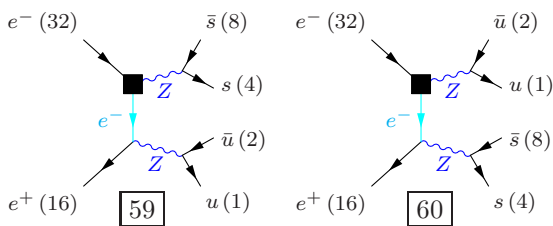
## Grove 2

Multiplicity: 1  
Resonances: 1  
Log-enhanced: 1  
t-channel: 0



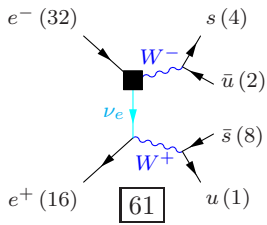
## Grove 3

Multiplicity: 2  
Resonances: 2  
Log-enhanced: 1  
t-channel: 1



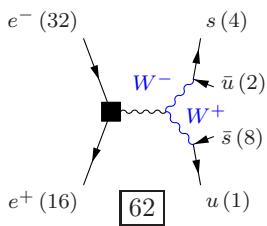
**Grove 4**

Multiplicity: 2  
Resonances: 2  
Log-enhanced: 1  
t-channel: 1



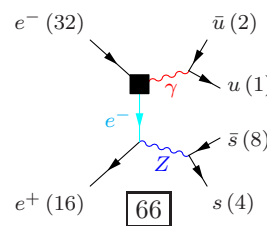
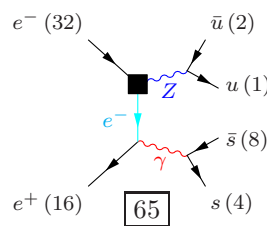
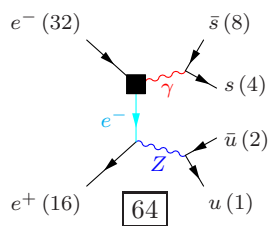
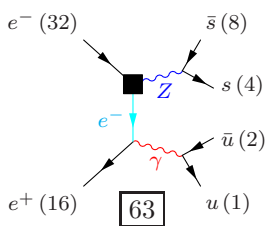
**Grove 5**

Multiplicity: 2  
Resonances: 2  
Log-enhanced: 0  
t-channel: 0



**Grove 6**

Multiplicity: 3  
Resonances: 1  
Log-enhanced: 2  
t-channel: 1



**Grove 7**

Multiplicity: 4  
Resonances: 0  
Log-enhanced: 3  
t-channel: 1

