

WHIZARD phase space channels

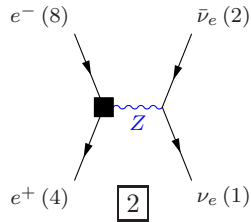
July 14, 2012

Process: z_nu0nue ($e^- e^+ \rightarrow \nu_e \bar{\nu}_e$)

Color code: resonance, t-channel, radiation, infrared, collinear, external/off-shell

Grove 1

Multiplicity: 1
Resonances: 1
Log-enhanced: 0
t-channel: 0



Grove 2

Multiplicity: 2
Resonances: 0
Log-enhanced: 1
t-channel: 1

