

WHIZARD phase space channels

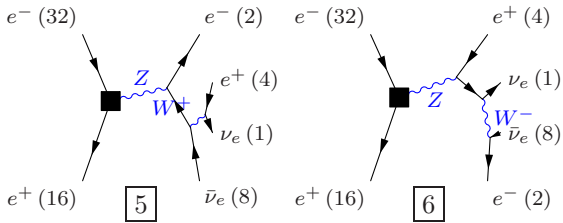
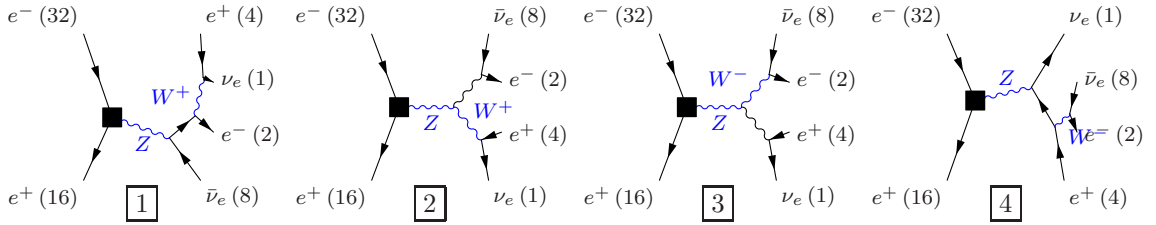
March 2, 2012

Process:  $\text{szeorsw}_{101}$  ( $e^-e^+ \rightarrow \nu_e e^- e^+ \bar{\nu}_e$ )

Color code: resonance, t-channel, radiation, infrared, collinear, external/off-shell

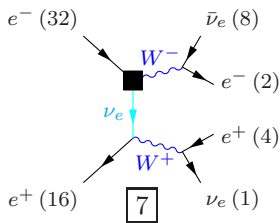
**Grove 1**

Multiplicity: 1  
Resonances: 2  
Log-enhanced: 0  
t-channel: 0



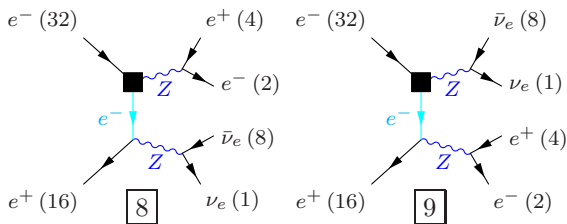
**Grove 2**

Multiplicity: 2  
Resonances: 2  
Log-enhanced: 1  
t-channel: 1



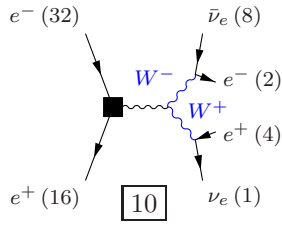
**Grove 3**

Multiplicity: 2  
Resonances: 2  
Log-enhanced: 1  
t-channel: 1



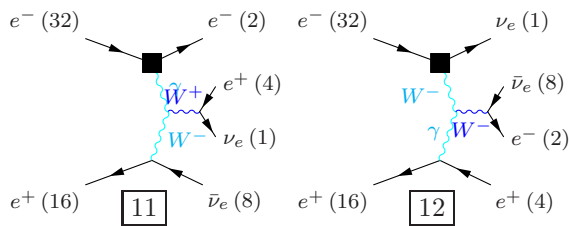
**Grove 4**

Multiplicity: 2  
Resonances: 2  
Log-enhanced: 0  
t-channel: 0



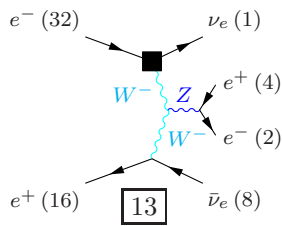
**Grove 5**

Multiplicity: 3  
Resonances: 1  
Log-enhanced: 2  
t-channel: 2



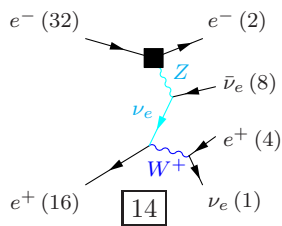
**Grove 6**

Multiplicity: 3  
Resonances: 1  
Log-enhanced: 2  
t-channel: 2



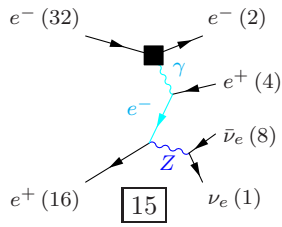
**Grove 7**

Multiplicity: 3  
Resonances: 1  
Log-enhanced: 2  
t-channel: 2



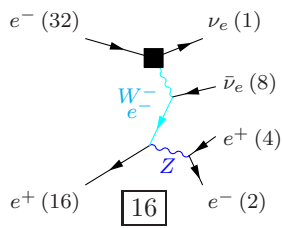
**Grove 8**

Multiplicity: 3  
Resonances: 1  
Log-enhanced: 2  
t-channel: 2



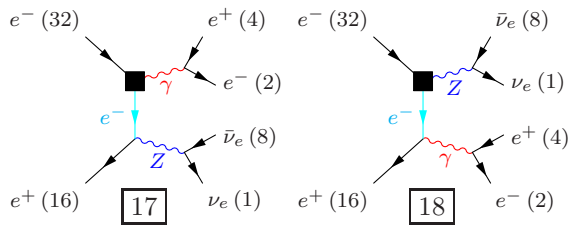
**Grove 9**

Multiplicity: 3  
Resonances: 1  
Log-enhanced: 2  
t-channel: 2



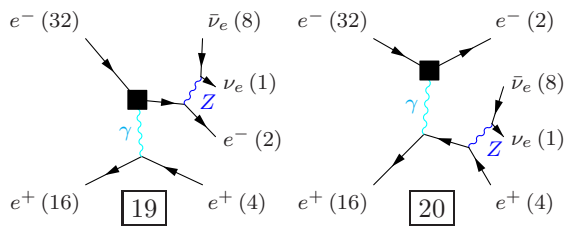
**Grove 10**

Multiplicity: 3  
Resonances: 1  
Log-enhanced: 2  
t-channel: 1



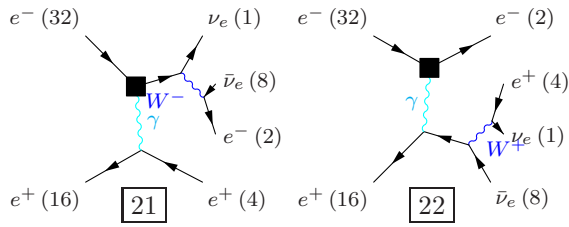
**Grove 11**

Multiplicity: 3  
Resonances: 1  
Log-enhanced: 1  
t-channel: 1



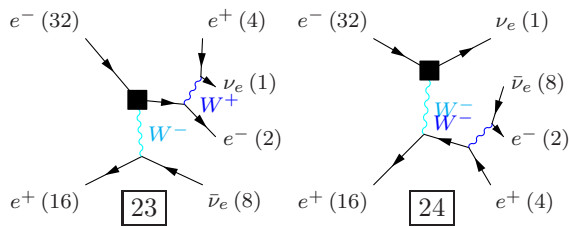
**Grove 12**

Multiplicity: 3  
Resonances: 1  
Log-enhanced: 1  
t-channel: 1



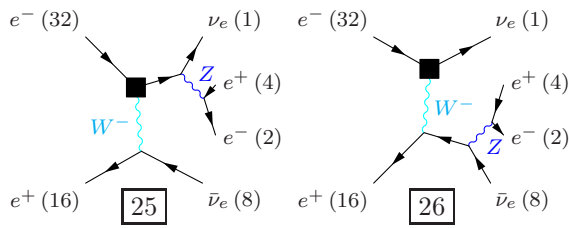
**Grove 13**

Multiplicity: 3  
Resonances: 1  
Log-enhanced: 1  
t-channel: 1



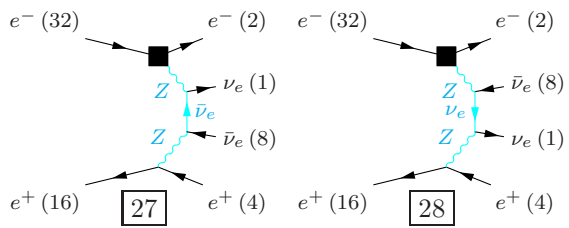
**Grove 14**

Multiplicity: 3  
Resonances: 1  
Log-enhanced: 1  
t-channel: 1



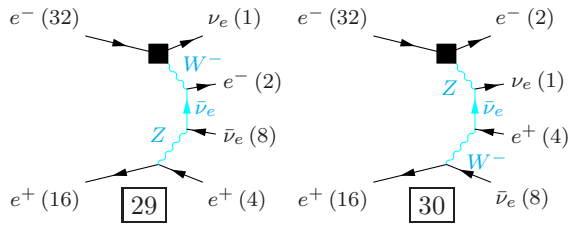
**Grove 15**

Multiplicity: 4  
Resonances: 0  
Log-enhanced: 3  
t-channel: 3



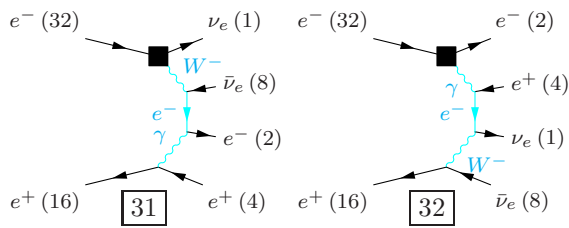
**Grove 16**

Multiplicity: 4  
Resonances: 0  
Log-enhanced: 3  
t-channel: 3



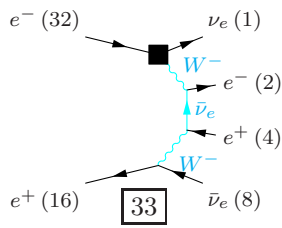
**Grove 17**

Multiplicity: 4  
Resonances: 0  
Log-enhanced: 3  
t-channel: 3



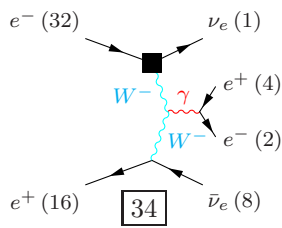
**Grove 18**

Multiplicity: 4  
Resonances: 0  
Log-enhanced: 3  
t-channel: 3



**Grove 19**

Multiplicity: 4  
Resonances: 0  
Log-enhanced: 3  
t-channel: 2



**Grove 20**

Multiplicity: 4  
Resonances: 0  
Log-enhanced: 3  
t-channel: 2

