

# WHIZARD phase space channels

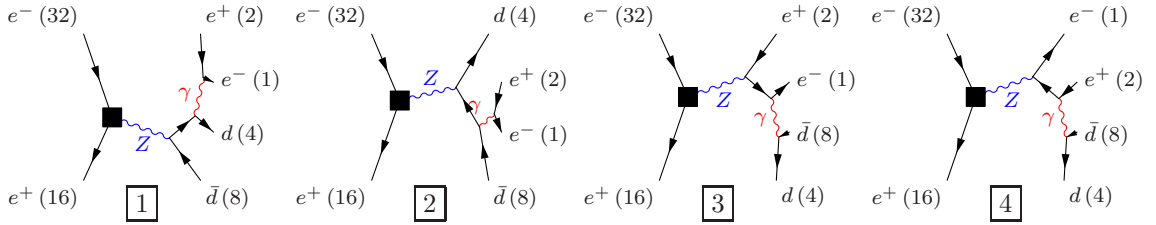
March 2, 2012

Process:  $sz_e s_{10} dd$  ( $e^- e^+ \rightarrow e^- e^+ d d$ ),  $e^- e^+ \rightarrow e^- e^+ s \bar{s}$ ,  $e^- e^+ \rightarrow e^- e^+ b \bar{b}$ )

Color code: resonance, t-channel, radiation, infrared, collinear, external/off-shell

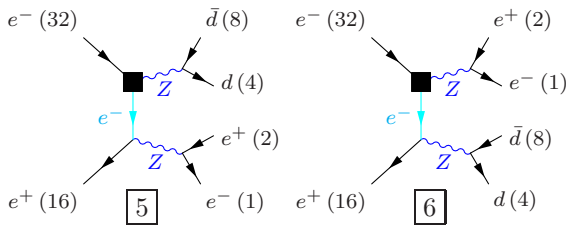
## Grove 1

Multiplicity: 1  
Resonances: 1  
Log-enhanced: 1  
t-channel: 0



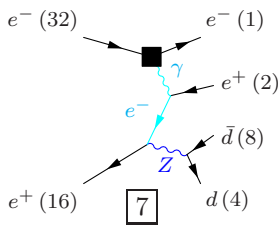
## Grove 2

Multiplicity: 2  
Resonances: 2  
Log-enhanced: 1  
t-channel: 1



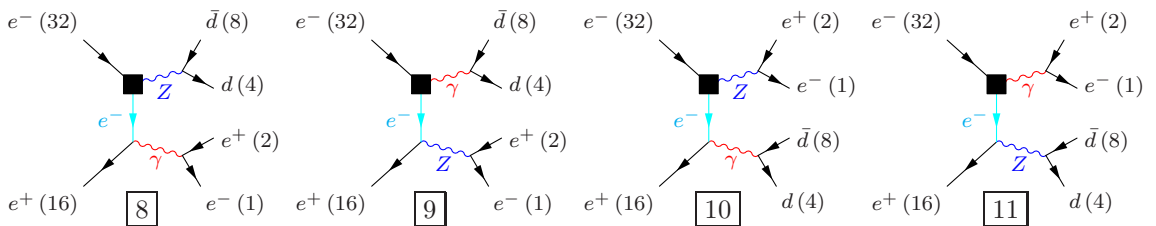
## Grove 3

Multiplicity: 3  
Resonances: 1  
Log-enhanced: 2  
t-channel: 2



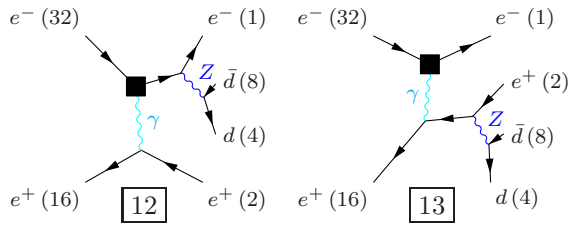
## Grove 4

Multiplicity: 3  
Resonances: 1  
Log-enhanced: 2  
t-channel: 1



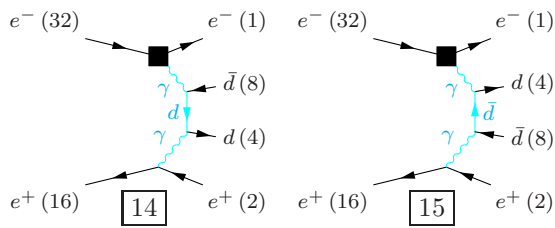
**Grove 5**

Multiplicity: 3  
Resonances: 1  
Log-enhanced: 1  
t-channel: 1



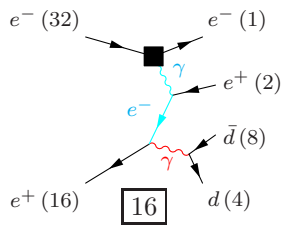
**Grove 6**

Multiplicity: 4  
Resonances: 0  
Log-enhanced: 3  
t-channel: 3



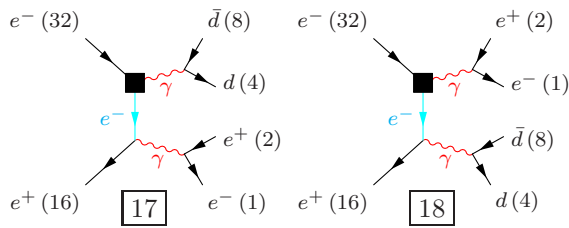
**Grove 7**

Multiplicity: 4  
Resonances: 0  
Log-enhanced: 3  
t-channel: 2



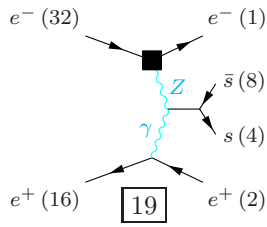
**Grove 8**

Multiplicity: 4  
Resonances: 0  
Log-enhanced: 3  
t-channel: 1



**Grove 9**

Multiplicity: 4  
Resonances: 0  
Log-enhanced: 2  
t-channel: 2



**Grove 10**

Multiplicity: 4  
Resonances: 0  
Log-enhanced: 2  
t-channel: 1

