

WHIZARD phase space channels

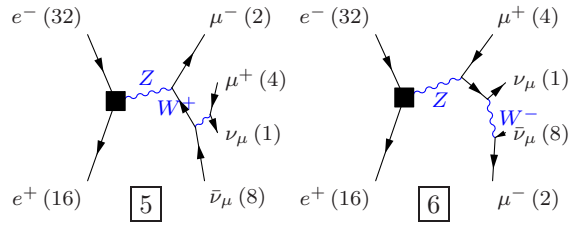
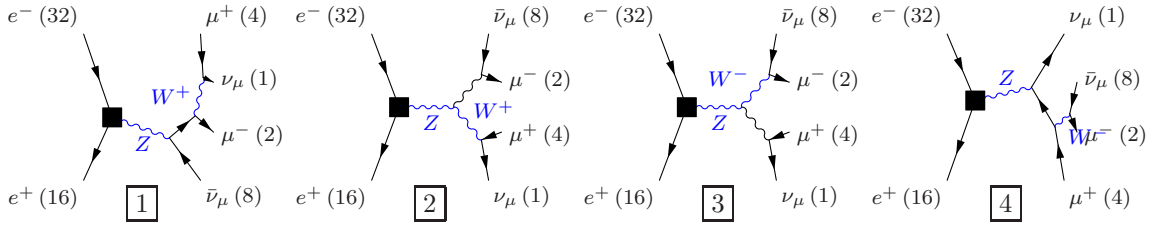
March 2, 2012

Process: zzorww\_10mumu ( $e^-e^+ \rightarrow \nu_\mu\mu^-\mu^+\bar{\nu}_\mu$ )

Color code: resonance, t-channel, radiation, infrared, collinear, external/off-shell

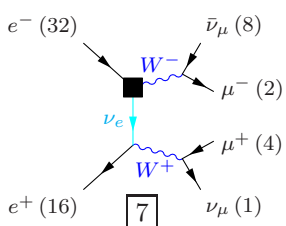
**Grove 1**

Multiplicity: 1  
Resonances: 2  
Log-enhanced: 0  
t-channel: 0



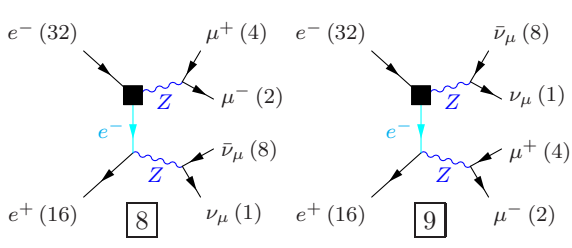
**Grove 2**

Multiplicity: 2  
Resonances: 2  
Log-enhanced: 1  
t-channel: 1



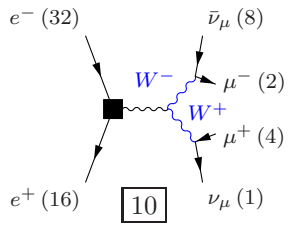
**Grove 3**

Multiplicity: 2  
Resonances: 2  
Log-enhanced: 1  
t-channel: 1



**Grove 4**

Multiplicity: 2  
Resonances: 2  
Log-enhanced: 0  
t-channel: 0



**Grove 5**

Multiplicity: 3  
Resonances: 1  
Log-enhanced: 2  
t-channel: 1

