

WHIZARD phase space channels

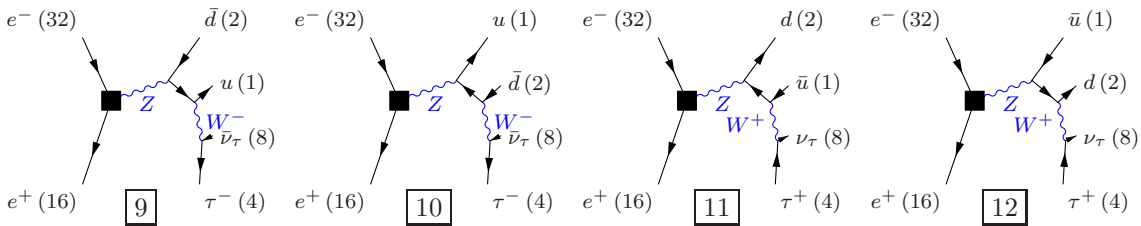
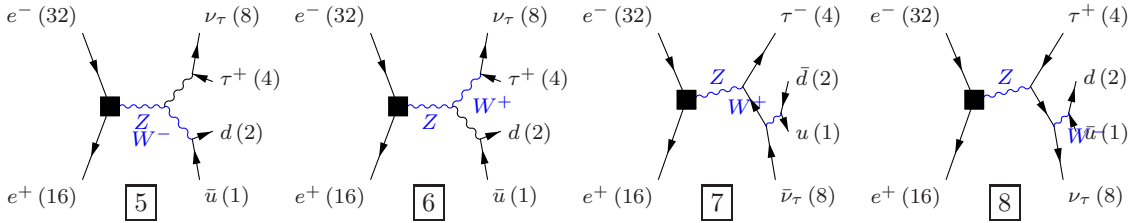
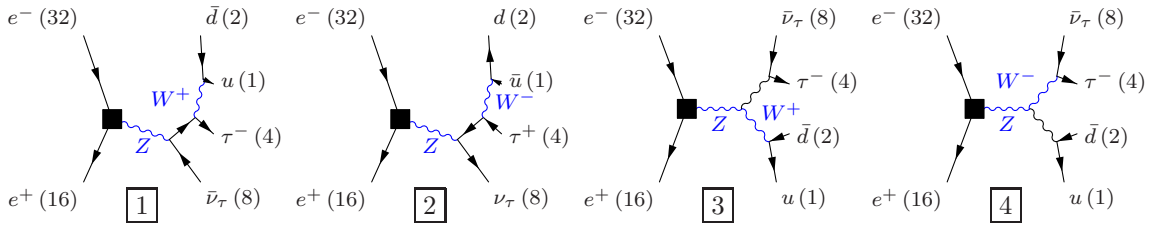
March 2, 2012

Process: $ww_sl0\tau uq$ ($e^-e^+ \rightarrow u\bar{d}\tau^-\bar{\nu}_\tau$), $e^-e^+ \rightarrow u\bar{s}\tau^-\bar{\nu}_\tau$, $e^-e^+ \rightarrow u\bar{b}\tau^-\bar{\nu}_\tau$, $e^-e^+ \rightarrow c\bar{d}\tau^-\bar{\nu}_\tau$, $e^-e^+ \rightarrow c\bar{s}\tau^-\bar{\nu}_\tau$, $e^-e^+ \rightarrow c\bar{b}\tau^-\bar{\nu}_\tau$, $e^-e^+ \rightarrow \bar{u}d\tau^+\nu_\tau$, $e^-e^+ \rightarrow \bar{u}s\tau^+\nu_\tau$, $e^-e^+ \rightarrow \bar{u}b\tau^+\nu_\tau$, $e^-e^+ \rightarrow \bar{c}d\tau^+\nu_\tau$, $e^-e^+ \rightarrow \bar{c}s\tau^+\nu_\tau$, $e^-e^+ \rightarrow \bar{c}b\tau^+\nu_\tau$)

Color code: resonance, t-channel, radiation, infrared, collinear, external/off-shell

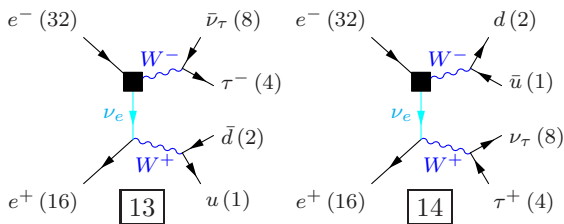
Grove 1

Multiplicity: 1
Resonances: 2
Log-enhanced: 0
t-channel: 0



Grove 2

Multiplicity: 2
Resonances: 2
Log-enhanced: 1
t-channel: 1



Grove 3

Multiplicity: 2
Resonances: 2
Log-enhanced: 0
t-channel: 0

