

# WHIZARD phase space channels

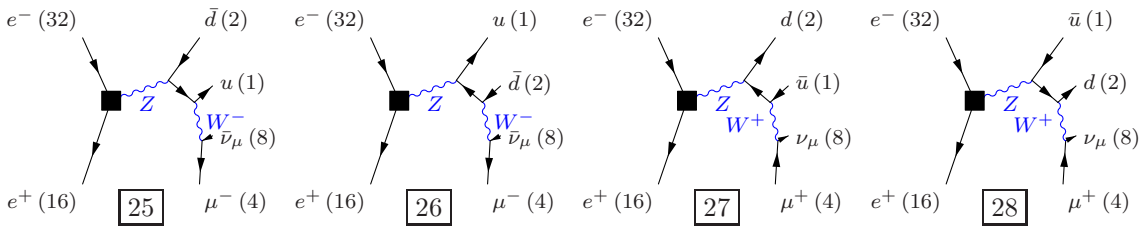
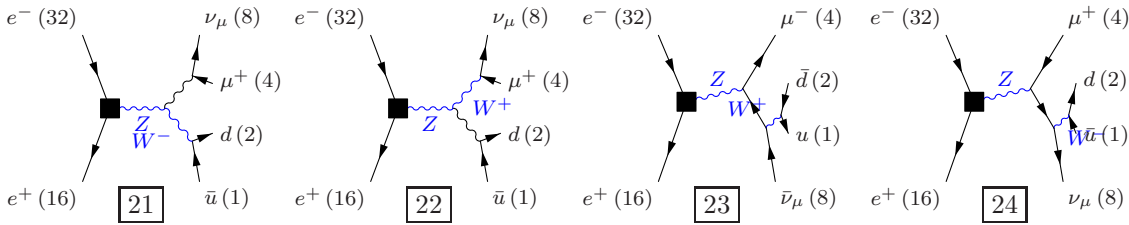
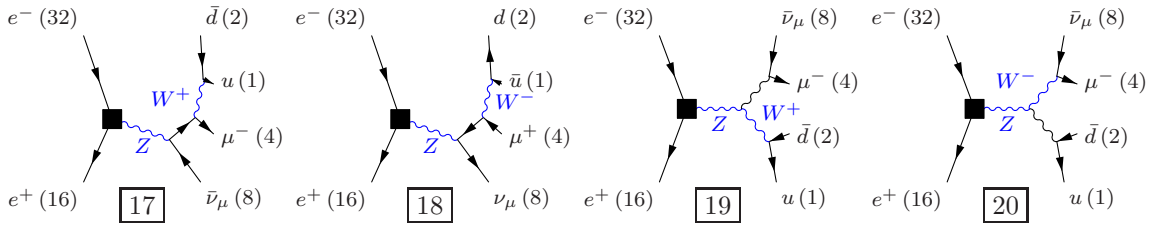
March 2, 2012

**Process:**  $ww\_s10\mu q$  ( $e^-e^+ \rightarrow u\bar{d}\mu^-\bar{\nu}_\mu$ ),  $e^-e^+ \rightarrow u\bar{s}\mu^-\bar{\nu}_\mu$ ,  $e^-e^+ \rightarrow u\bar{b}\mu^-\bar{\nu}_\mu$ ,  $e^-e^+ \rightarrow c\bar{d}\mu^-\bar{\nu}_\mu$ ,  $e^-e^+ \rightarrow c\bar{s}\mu^-\bar{\nu}_\mu$ ,  $e^-e^+ \rightarrow c\bar{b}\mu^-\bar{\nu}_\mu$ ,  $e^-e^+ \rightarrow \bar{u}d\mu^+\nu_\mu$ ,  $e^-e^+ \rightarrow \bar{u}s\mu^+\nu_\mu$ ,  $e^-e^+ \rightarrow \bar{u}b\mu^+\nu_\mu$ ,  $e^-e^+ \rightarrow \bar{c}d\mu^+\nu_\mu$ ,  $e^-e^+ \rightarrow \bar{c}s\mu^+\nu_\mu$ ,  $e^-e^+ \rightarrow \bar{c}b\mu^+\nu_\mu$ )

**Color code:** resonance, t-channel, radiation, infrared, collinear, external/off-shell

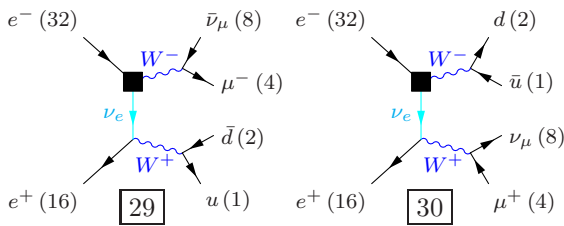
## Grove 1

Multiplicity: 1  
Resonances: 2  
Log-enhanced: 0  
t-channel: 0



## Grove 2

Multiplicity: 2  
Resonances: 2  
Log-enhanced: 1  
t-channel: 1



**Grove 3**

Multiplicity: 2  
Resonances: 2  
Log-enhanced: 0  
t-channel: 0

