

WHIZARD phase space channels

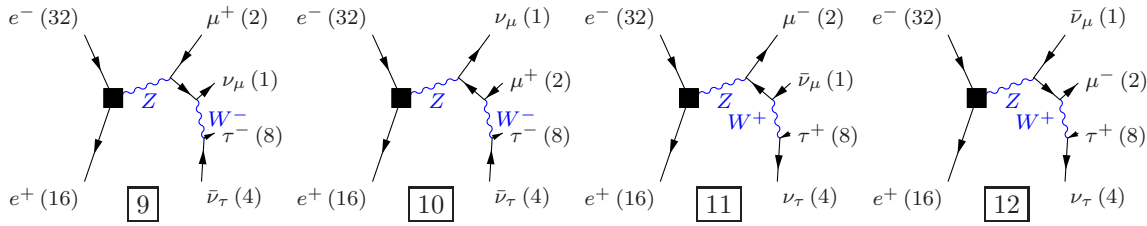
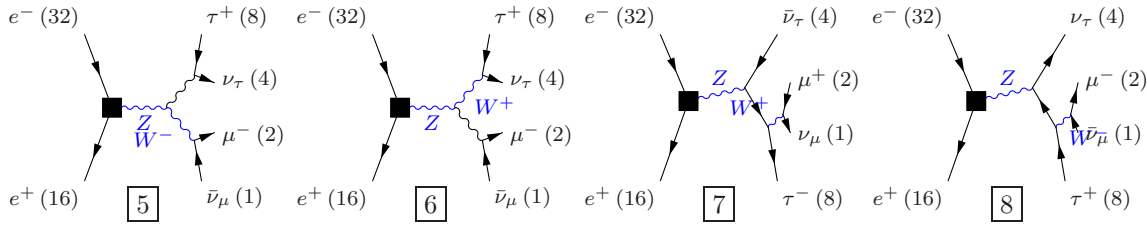
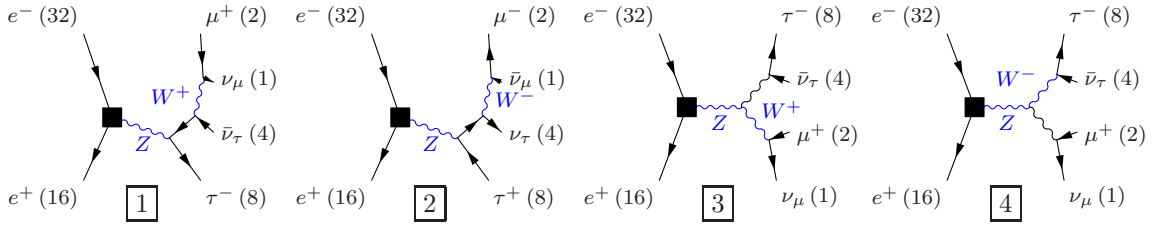
March 2, 2012

Process: $w\bar{w}_{1011}$ ($e^-e^+ \rightarrow \nu_\mu\mu^+\bar{\nu}_\tau\tau^-$), $e^-e^+ \rightarrow \bar{\nu}_\mu\mu^-\nu_\tau\tau^+$)

Color code: resonance, t-channel, radiation, infrared, collinear, external/off-shell

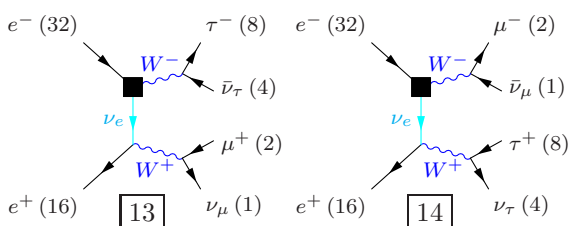
Grove 1

Multiplicity: 1
Resonances: 2
Log-enhanced: 0
t-channel: 0



Grove 2

Multiplicity: 2
Resonances: 2
Log-enhanced: 1
t-channel: 1



Grove 3

Multiplicity: 2
Resonances: 2
Log-enhanced: 0
t-channel: 0

