

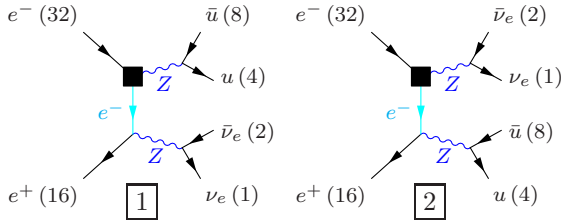
# WHIZARD phase space channels

November 13, 2012

**Process:**  $sznu\_s10nu\_up$  ( $e^-e^+ \rightarrow \nu_e\bar{\nu}_e u\bar{u}$ ),  $e^-e^+ \rightarrow \nu_e\bar{\nu}_e u\bar{c}$ ,  $e^-e^+ \rightarrow \nu_e\bar{\nu}_e c\bar{u}$ ,  $e^-e^+ \rightarrow \nu_e\bar{\nu}_e c\bar{c}$   
**Color code:** resonance, t-channel, radiation, infrared, collinear, external/off-shell

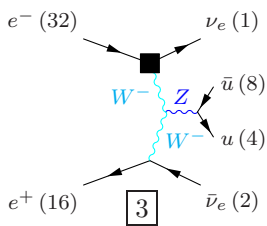
## Grove 1

Multiplicity: 2  
 Resonances: 2  
 Log-enhanced: 1  
 t-channel: 1



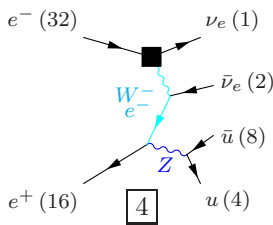
## Grove 2

Multiplicity: 3  
 Resonances: 1  
 Log-enhanced: 2  
 t-channel: 2



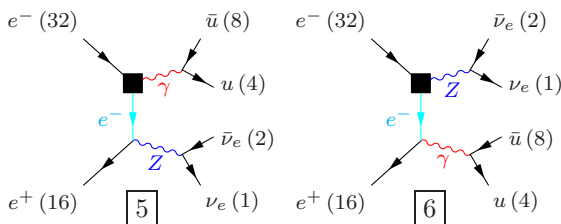
## Grove 3

Multiplicity: 3  
 Resonances: 1  
 Log-enhanced: 2  
 t-channel: 2



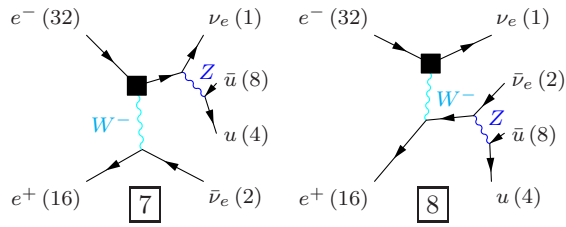
## Grove 4

Multiplicity: 3  
 Resonances: 1  
 Log-enhanced: 2  
 t-channel: 1



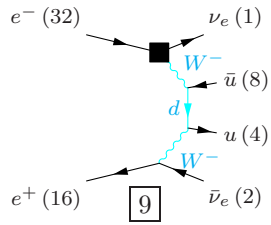
**Grove 5**

Multiplicity: 3  
Resonances: 1  
Log-enhanced: 1  
t-channel: 1



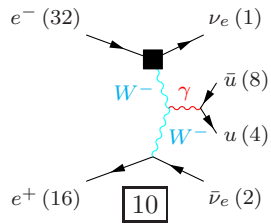
**Grove 6**

Multiplicity: 4  
Resonances: 0  
Log-enhanced: 3  
t-channel: 3



**Grove 7**

Multiplicity: 4  
Resonances: 0  
Log-enhanced: 3  
t-channel: 2



**Grove 8**

Multiplicity: 4  
Resonances: 0  
Log-enhanced: 3  
t-channel: 2

