

# WHIZARD phase space channels

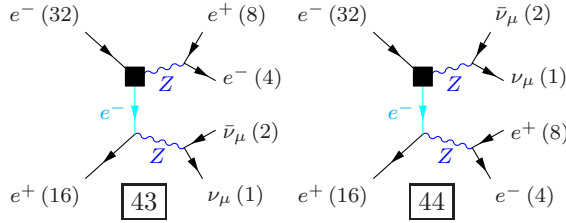
November 13, 2012

Process:  $\text{sze\_10nunu}$  ( $e^-e^+ \rightarrow \nu_\mu\bar{\nu}_\mu e^-e^+$ ),  $e^-e^+ \rightarrow \nu_\tau\bar{\nu}_\tau e^-e^+$

Color code: resonance, t-channel, radiation, infrared, collinear, external/off-shell

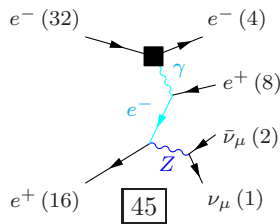
## Grove 1

Multiplicity: 2  
Resonances: 2  
Log-enhanced: 1  
t-channel: 1



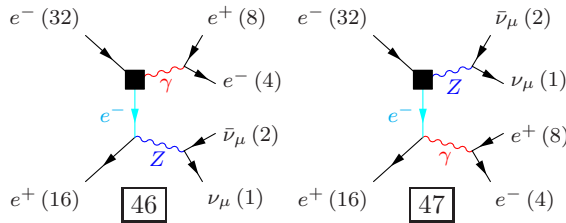
## Grove 2

Multiplicity: 3  
Resonances: 1  
Log-enhanced: 2  
t-channel: 2



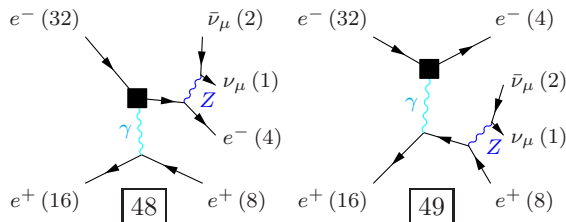
## Grove 3

Multiplicity: 3  
Resonances: 1  
Log-enhanced: 2  
t-channel: 1



## Grove 4

Multiplicity: 3  
Resonances: 1  
Log-enhanced: 1  
t-channel: 1



**Grove 5**

Multiplicity: 4  
Resonances: 0  
Log-enhanced: 3  
t-channel: 3

