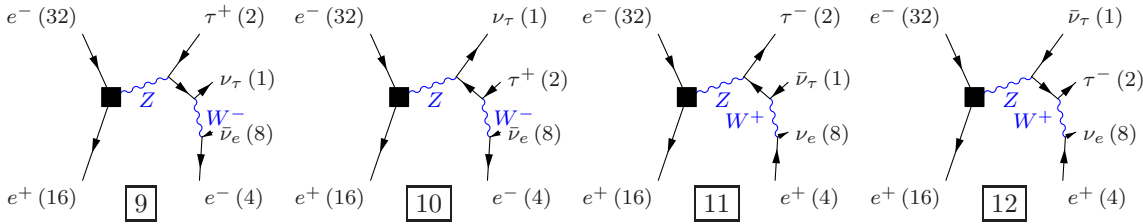
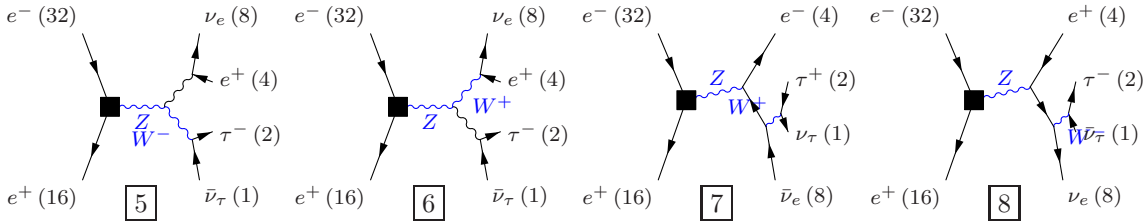
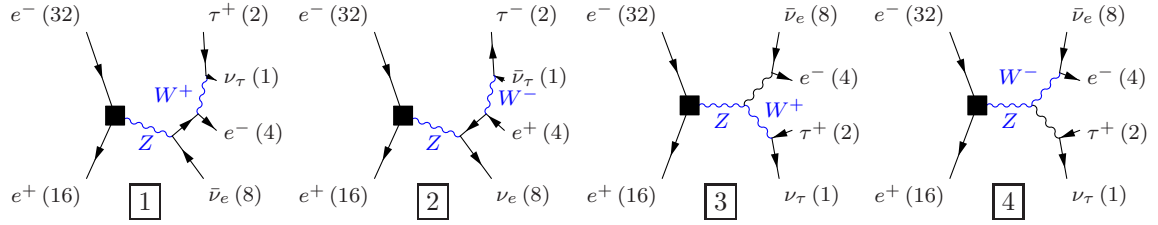


Process: sw_10tau ($e^-e^+ \rightarrow \nu_\tau\tau^+e^-\bar{\nu}_e$), $e^-e^+ \rightarrow \bar{\nu}_\tau\tau^-e^+\nu_e$)

Color code: resonance, t-channel, radiation, infrared, collinear, external/off-shell

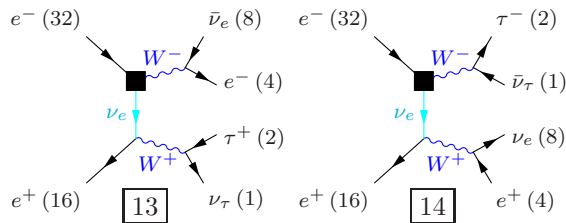
Grove 1

Multiplicity: 1
Resonances: 2
Log-enhanced: 0
t-channel: 0



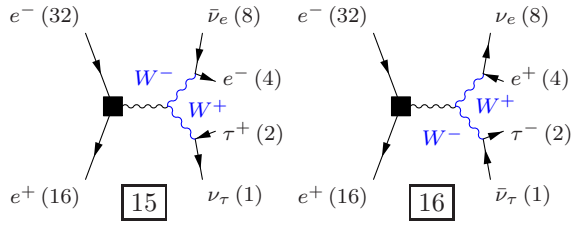
Grove 2

Multiplicity: 2
Resonances: 2
Log-enhanced: 1
t-channel: 1

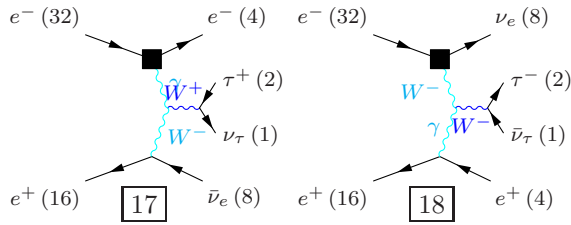


Grove 3

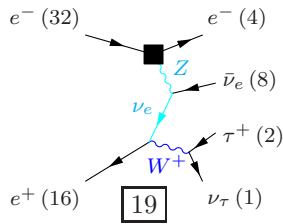
Multiplicity: 2
 Resonances: 2
 Log-enhanced: 0
 t-channel: 0

**Grove 4**

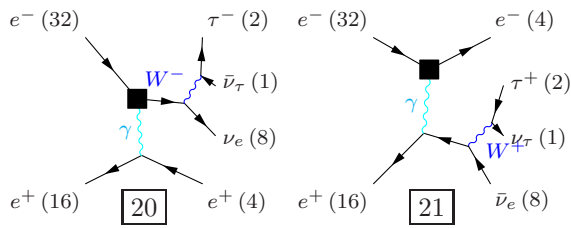
Multiplicity: 3
 Resonances: 1
 Log-enhanced: 2
 t-channel: 2

**Grove 5**

Multiplicity: 3
 Resonances: 1
 Log-enhanced: 2
 t-channel: 2

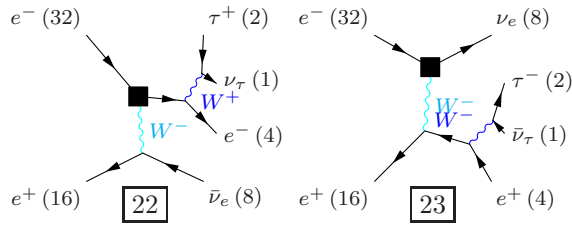
**Grove 6**

Multiplicity: 3
 Resonances: 1
 Log-enhanced: 1
 t-channel: 1



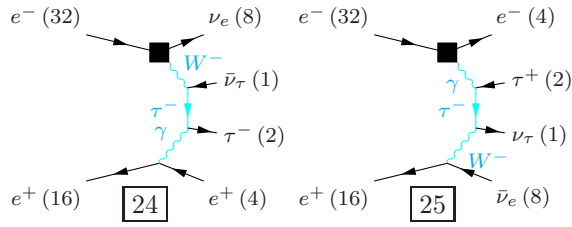
Grove 7

Multiplicity: 3
Resonances: 1
Log-enhanced: 1
t-channel: 1



Grove 8

Multiplicity: 4
Resonances: 0
Log-enhanced: 3
t-channel: 3



Grove 9

Multiplicity: 4
Resonances: 0
Log-enhanced: 3
t-channel: 3

