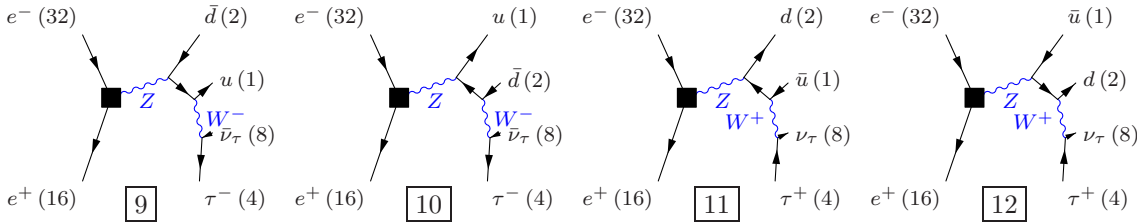
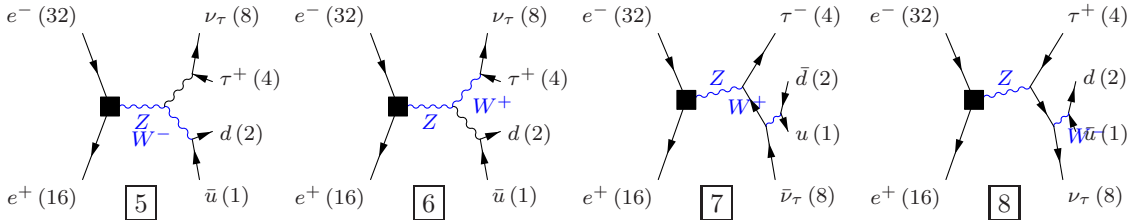
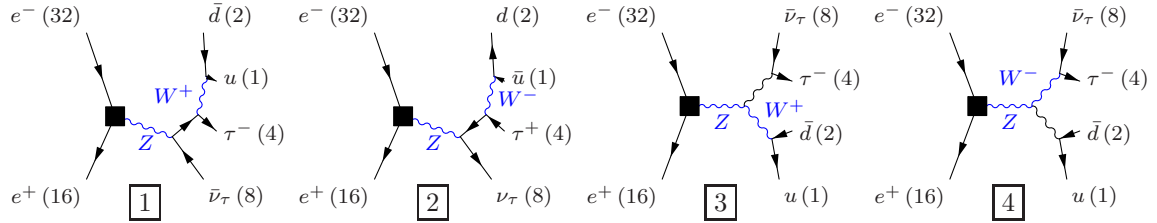


Process: $w\bar{w}_s l_0 \tau u q$ ($e^- e^+ \rightarrow u \bar{d} \tau^- \bar{\nu}_\tau$), $e^- e^+ \rightarrow u \bar{s} \tau^- \bar{\nu}_\tau$, $e^- e^+ \rightarrow u \bar{b} \tau^- \bar{\nu}_\tau$, $e^- e^+ \rightarrow c \bar{d} \tau^- \bar{\nu}_\tau$, $e^- e^+ \rightarrow c \bar{s} \tau^- \bar{\nu}_\tau$, $e^- e^+ \rightarrow c \bar{b} \tau^- \bar{\nu}_\tau$, $e^- e^+ \rightarrow \bar{u} d \tau^+ \nu_\tau$, $e^- e^+ \rightarrow \bar{u} s \tau^+ \nu_\tau$, $e^- e^+ \rightarrow \bar{u} b \tau^+ \nu_\tau$, $e^- e^+ \rightarrow \bar{c} d \tau^+ \nu_\tau$, $e^- e^+ \rightarrow \bar{c} s \tau^+ \nu_\tau$, $e^- e^+ \rightarrow \bar{c} b \tau^+ \nu_\tau$)

Color code: resonance, t-channel, radiation, infrared, collinear, external/off-shell

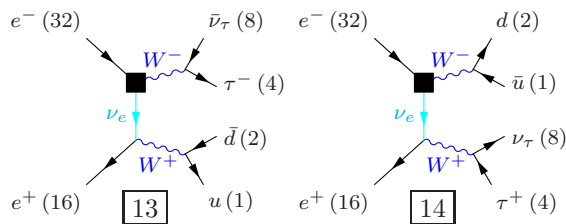
Grove 1

Multiplicity: 1
Resonances: 2
Log-enhanced: 0
t-channel: 0



Grove 2

Multiplicity: 2
Resonances: 2
Log-enhanced: 1
t-channel: 1



Grove 3

Multiplicity: 2
Resonances: 2
Log-enhanced: 0
t-channel: 0

