

## WHIZARD phase space channels

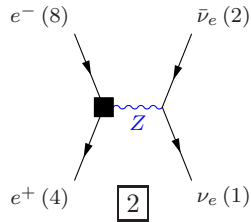
March 24, 2012

Process:  $z\_nu0nue$  ( $e^- e^+ \rightarrow \nu_e \bar{\nu}_e$ )

Color code: resonance, t-channel, radiation, infrared, collinear, external/off-shell

### Grove 1

Multiplicity: 1  
Resonances: 1  
Log-enhanced: 0  
t-channel: 0



### Grove 2

Multiplicity: 2  
Resonances: 0  
Log-enhanced: 1  
t-channel: 1

