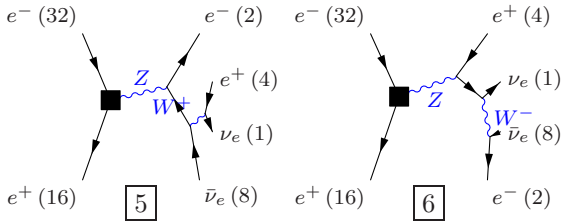
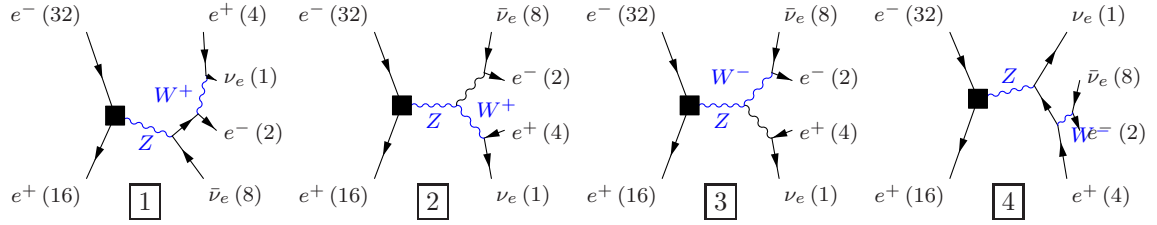


Process: `szeorsw_101` ($e^-e^+ \rightarrow \nu_e e^- e^+ \bar{\nu}_e$)

Color code: resonance, t-channel, radiation, infrared, collinear, external/off-shell

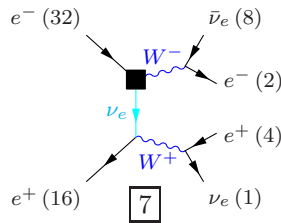
Grove 1

Multiplicity: 1
 Resonances: 2
 Log-enhanced: 0
 t-channel: 0



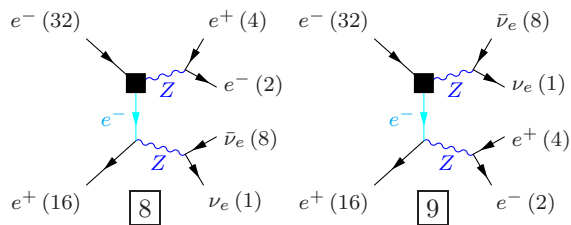
Grove 2

Multiplicity: 2
 Resonances: 2
 Log-enhanced: 1
 t-channel: 1



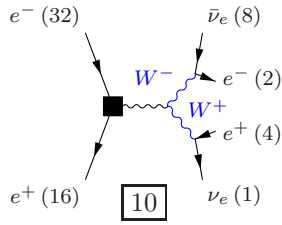
Grove 3

Multiplicity: 2
 Resonances: 2
 Log-enhanced: 1
 t-channel: 1



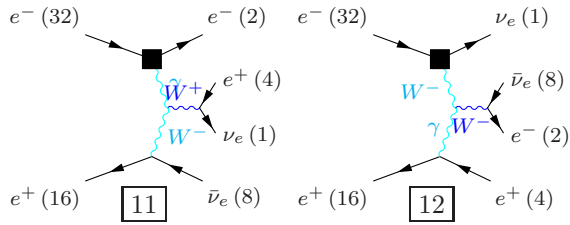
Grove 4

Multiplicity: 2
Resonances: 2
Log-enhanced: 0
t-channel: 0



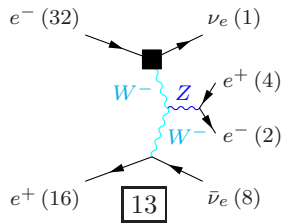
Grove 5

Multiplicity: 3
Resonances: 1
Log-enhanced: 2
t-channel: 2



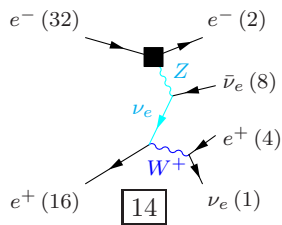
Grove 6

Multiplicity: 3
Resonances: 1
Log-enhanced: 2
t-channel: 2



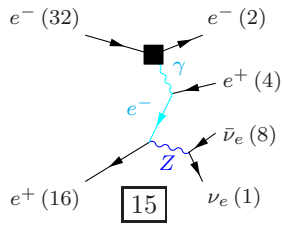
Grove 7

Multiplicity: 3
Resonances: 1
Log-enhanced: 2
t-channel: 2

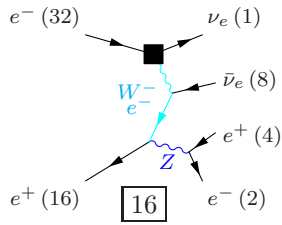


Grove 8

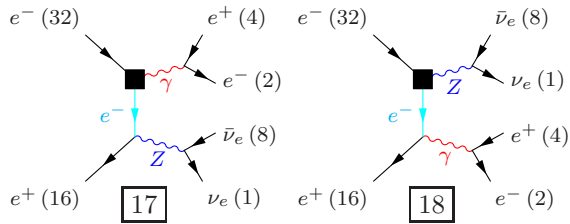
Multiplicity: 3
 Resonances: 1
 Log-enhanced: 2
 t-channel: 2

**Grove 9**

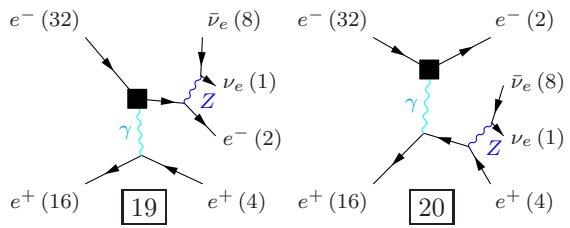
Multiplicity: 3
 Resonances: 1
 Log-enhanced: 2
 t-channel: 2

**Grove 10**

Multiplicity: 3
 Resonances: 1
 Log-enhanced: 2
 t-channel: 1

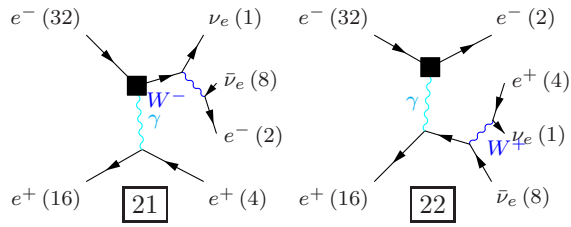
**Grove 11**

Multiplicity: 3
 Resonances: 1
 Log-enhanced: 1
 t-channel: 1

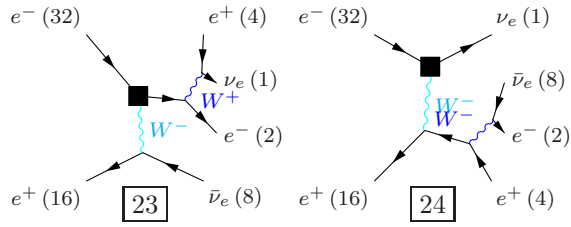


Grove 12

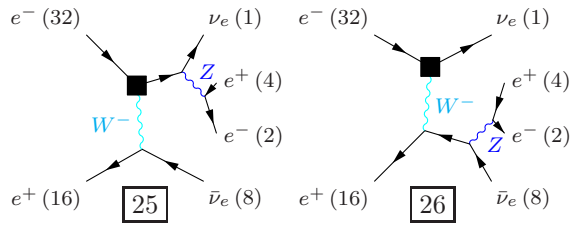
Multiplicity: 3
 Resonances: 1
 Log-enhanced: 1
 t-channel: 1

**Grove 13**

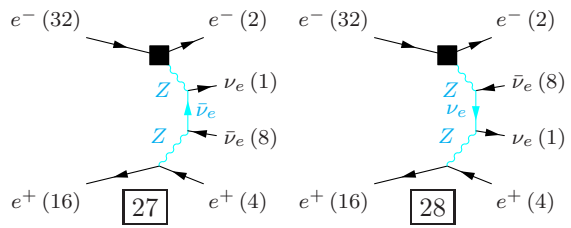
Multiplicity: 3
 Resonances: 1
 Log-enhanced: 1
 t-channel: 1

**Grove 14**

Multiplicity: 3
 Resonances: 1
 Log-enhanced: 1
 t-channel: 1

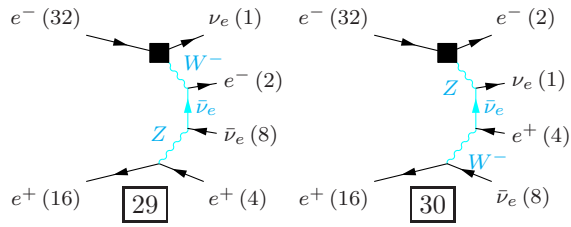
**Grove 15**

Multiplicity: 4
 Resonances: 0
 Log-enhanced: 3
 t-channel: 3

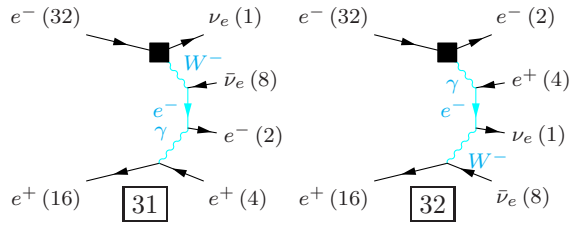


Grove 16

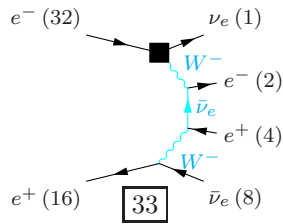
Multiplicity: 4
 Resonances: 0
 Log-enhanced: 3
 t-channel: 3

**Grove 17**

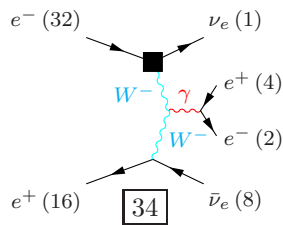
Multiplicity: 4
 Resonances: 0
 Log-enhanced: 3
 t-channel: 3

**Grove 18**

Multiplicity: 4
 Resonances: 0
 Log-enhanced: 3
 t-channel: 3

**Grove 19**

Multiplicity: 4
 Resonances: 0
 Log-enhanced: 3
 t-channel: 2



Grove 20

Multiplicity: 4
Resonances: 0
Log-enhanced: 3
t-channel: 2

