

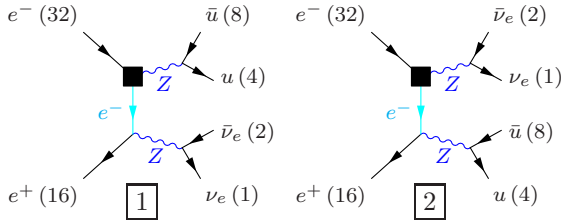
WHIZARD phase space channels

November 13, 2012

Process: $sznu_s10nu_up$ ($e^-e^+ \rightarrow \nu_e\bar{\nu}_e u\bar{u}$), $e^-e^+ \rightarrow \nu_e\bar{\nu}_e u\bar{c}$, $e^-e^+ \rightarrow \nu_e\bar{\nu}_e c\bar{u}$, $e^-e^+ \rightarrow \nu_e\bar{\nu}_e c\bar{c}$
Color code: resonance, t-channel, radiation, infrared, collinear, external/off-shell

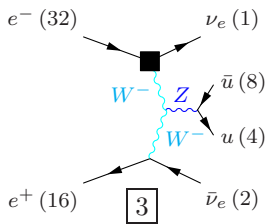
Grove 1

Multiplicity: 2
 Resonances: 2
 Log-enhanced: 1
 t-channel: 1



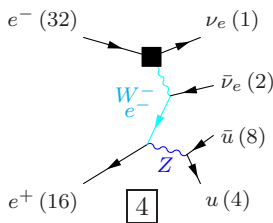
Grove 2

Multiplicity: 3
 Resonances: 1
 Log-enhanced: 2
 t-channel: 2



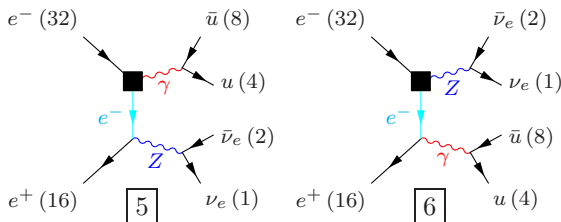
Grove 3

Multiplicity: 3
 Resonances: 1
 Log-enhanced: 2
 t-channel: 2



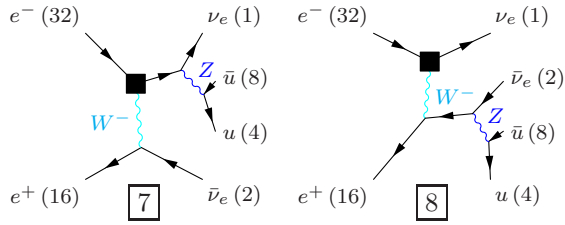
Grove 4

Multiplicity: 3
 Resonances: 1
 Log-enhanced: 2
 t-channel: 1



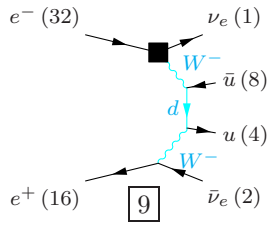
Grove 5

Multiplicity: 3
Resonances: 1
Log-enhanced: 1
t-channel: 1



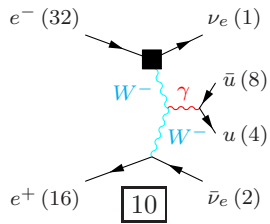
Grove 6

Multiplicity: 4
Resonances: 0
Log-enhanced: 3
t-channel: 3



Grove 7

Multiplicity: 4
Resonances: 0
Log-enhanced: 3
t-channel: 2



Grove 8

Multiplicity: 4
Resonances: 0
Log-enhanced: 3
t-channel: 2

