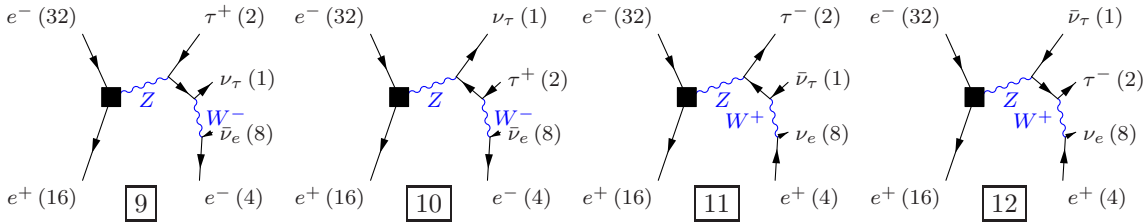
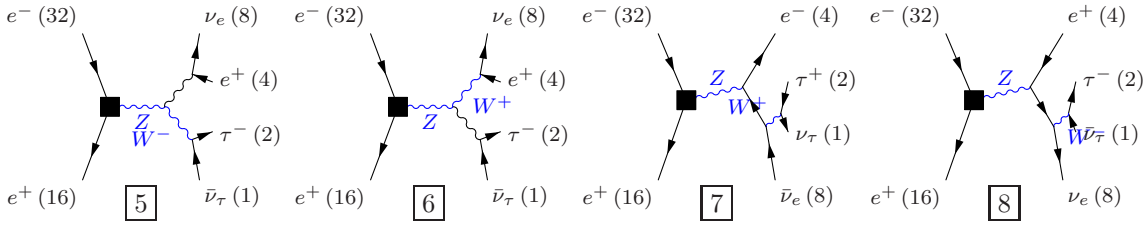
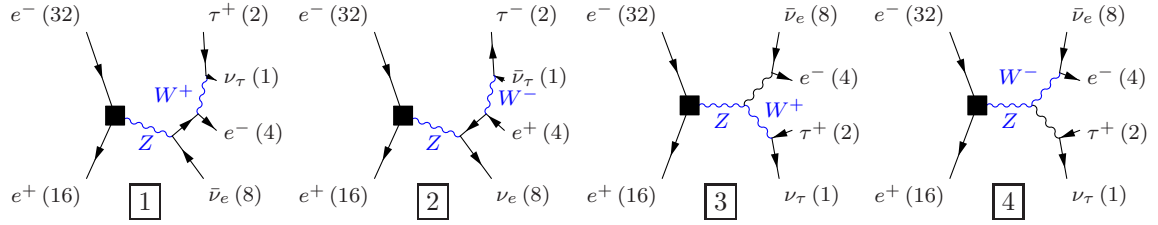


Process: sw_10tau ($e^-e^+ \rightarrow \nu_\tau\tau^+e^-\bar{\nu}_e$), $e^-e^+ \rightarrow \bar{\nu}_\tau\tau^-e^+\nu_e$)

Color code: resonance, t-channel, radiation, infrared, collinear, external/off-shell

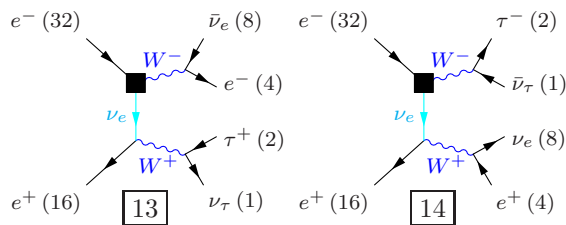
Grove 1

Multiplicity: 1
Resonances: 2
Log-enhanced: 0
t-channel: 0



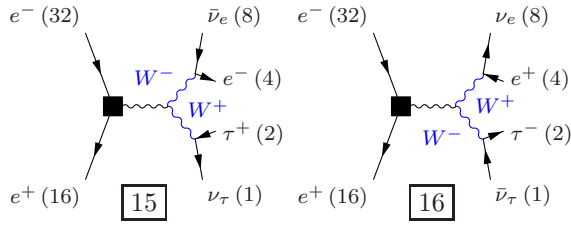
Grove 2

Multiplicity: 2
Resonances: 2
Log-enhanced: 1
t-channel: 1



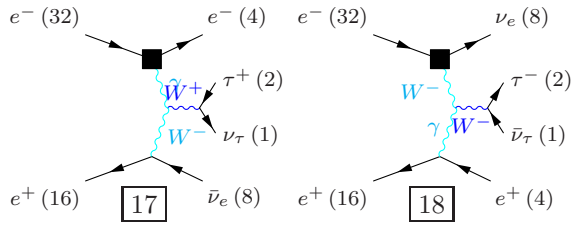
Grove 3

Multiplicity: 2
Resonances: 2
Log-enhanced: 0
t-channel: 0



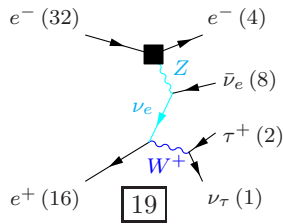
Grove 4

Multiplicity: 3
Resonances: 1
Log-enhanced: 2
t-channel: 2



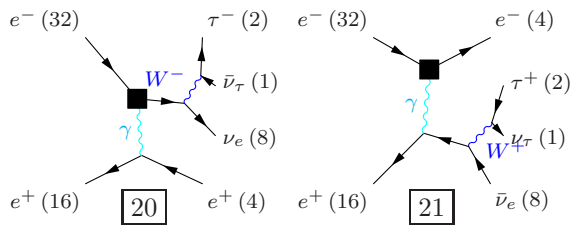
Grove 5

Multiplicity: 3
Resonances: 1
Log-enhanced: 2
t-channel: 2



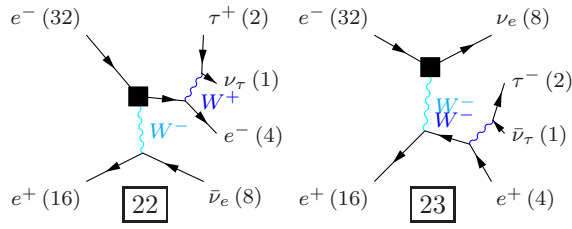
Grove 6

Multiplicity: 3
Resonances: 1
Log-enhanced: 1
t-channel: 1



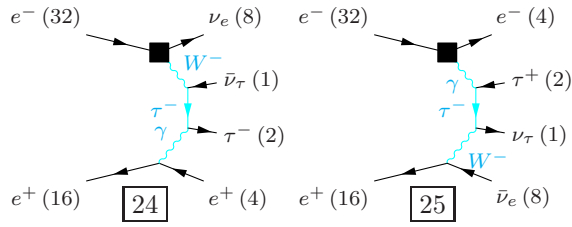
Grove 7

Multiplicity: 3
Resonances: 1
Log-enhanced: 1
t-channel: 1



Grove 8

Multiplicity: 4
Resonances: 0
Log-enhanced: 3
t-channel: 3



Grove 9

Multiplicity: 4
Resonances: 0
Log-enhanced: 3
t-channel: 3

