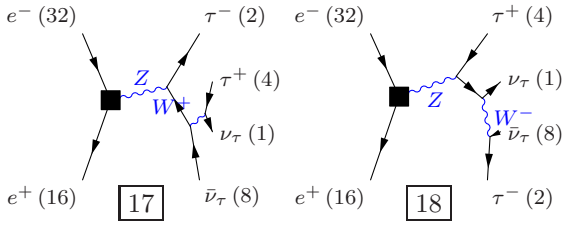
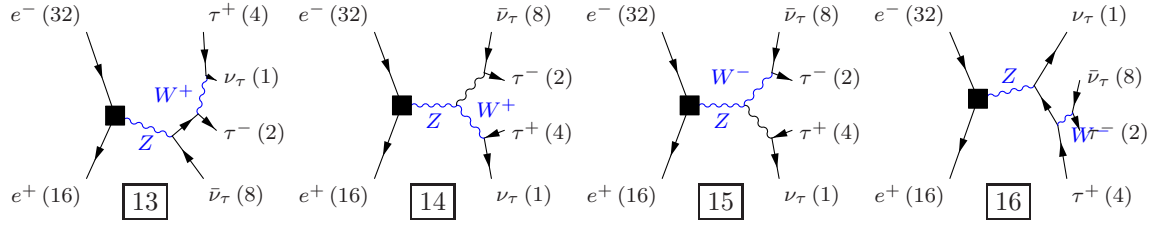


Process: zzroww\_10tautau ( $e^-e^+ \rightarrow \nu_\tau\tau^-\tau^+\bar{\nu}_\tau$ )

Color code: resonance, t-channel, radiation, infrared, collinear, external/off-shell

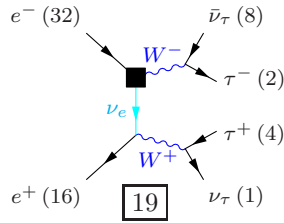
**Grove 1**

Multiplicity: 1  
 Resonances: 2  
 Log-enhanced: 0  
 t-channel: 0



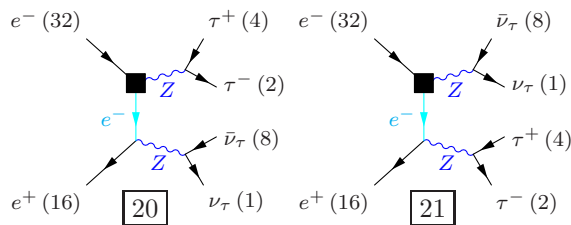
**Grove 2**

Multiplicity: 2  
 Resonances: 2  
 Log-enhanced: 1  
 t-channel: 1



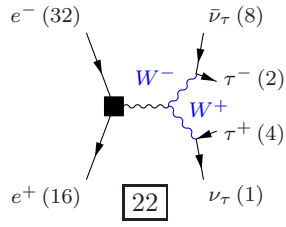
**Grove 3**

Multiplicity: 2  
 Resonances: 2  
 Log-enhanced: 1  
 t-channel: 1



**Grove 4**

Multiplicity: 2  
Resonances: 2  
Log-enhanced: 0  
t-channel: 0



**Grove 5**

Multiplicity: 3  
Resonances: 1  
Log-enhanced: 2  
t-channel: 1

