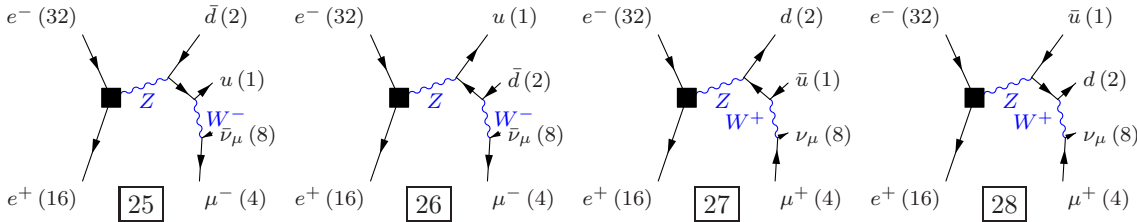
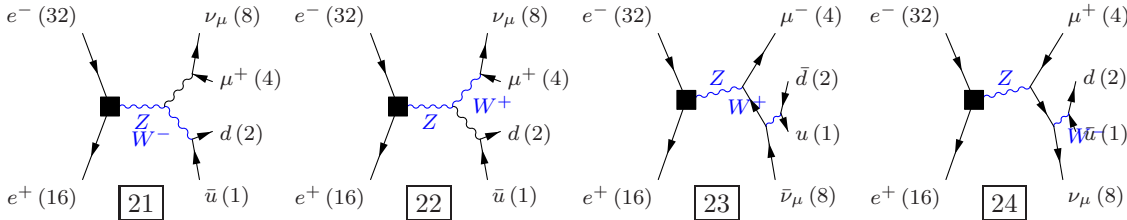
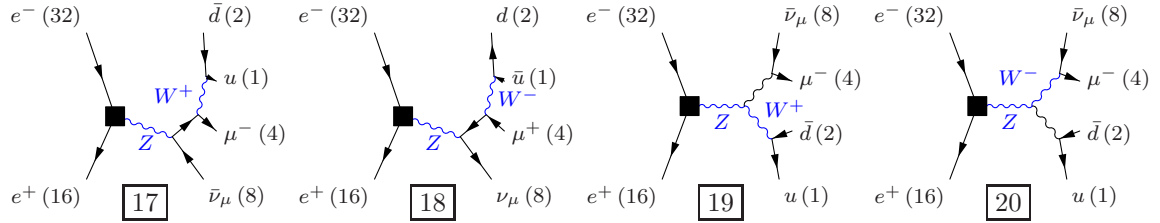


Process: $w\bar{w}_s10\mu q$ ($e^-e^+ \rightarrow u\bar{d}\mu^-\bar{\nu}_\mu$), $e^-e^+ \rightarrow u\bar{s}\mu^-\bar{\nu}_\mu$, $e^-e^+ \rightarrow u\bar{b}\mu^-\bar{\nu}_\mu$, $e^-e^+ \rightarrow c\bar{d}\mu^-\bar{\nu}_\mu$, $e^-e^+ \rightarrow c\bar{s}\mu^-\bar{\nu}_\mu$, $e^-e^+ \rightarrow c\bar{b}\mu^-\bar{\nu}_\mu$, $e^-e^+ \rightarrow \bar{u}d\mu^+\nu_\mu$, $e^-e^+ \rightarrow \bar{u}s\mu^+\nu_\mu$, $e^-e^+ \rightarrow \bar{u}b\mu^+\nu_\mu$, $e^-e^+ \rightarrow \bar{c}d\mu^+\nu_\mu$, $e^-e^+ \rightarrow \bar{c}s\mu^+\nu_\mu$, $e^-e^+ \rightarrow \bar{c}b\mu^+\nu_\mu$)

Color code: resonance, t-channel, radiation, infrared, collinear, external/off-shell

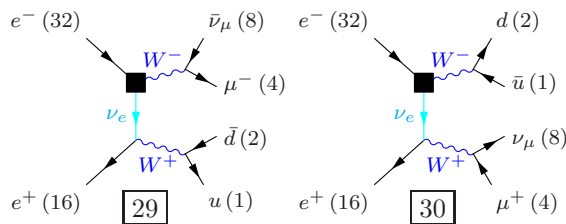
Grove 1

Multiplicity: 1
Resonances: 2
Log-enhanced: 0
t-channel: 0



Grove 2

Multiplicity: 2
Resonances: 2
Log-enhanced: 1
t-channel: 1



Grove 3

Multiplicity: 2
Resonances: 2
Log-enhanced: 0
t-channel: 0

