

WHIZARD phase space channels

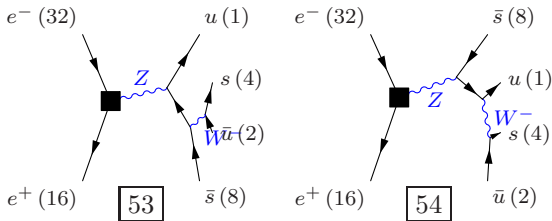
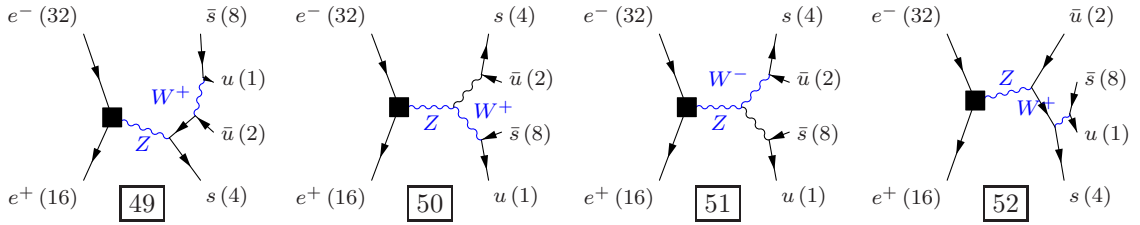
March 2, 2012

Process: zz_h0uu_notd ($e^-e^+ \rightarrow u\bar{u}s\bar{s}$), $e^-e^+ \rightarrow u\bar{u}s\bar{b}$, $e^-e^+ \rightarrow u\bar{u}b\bar{s}$, $e^-e^+ \rightarrow u\bar{u}b\bar{b}$)

Color code: resonance, t-channel, radiation, infrared, collinear, external/off-shell

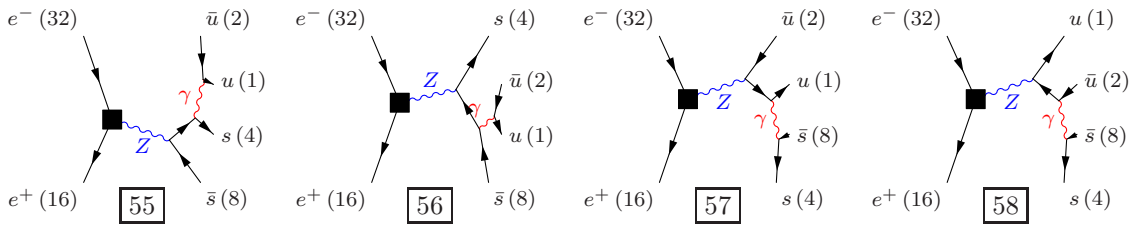
Grove 1

Multiplicity: 1
Resonances: 2
Log-enhanced: 0
t-channel: 0



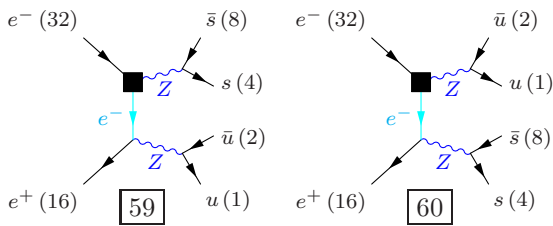
Grove 2

Multiplicity: 1
Resonances: 1
Log-enhanced: 1
t-channel: 0



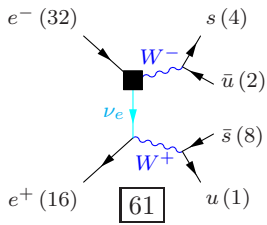
Grove 3

Multiplicity: 2
Resonances: 2
Log-enhanced: 1
t-channel: 1



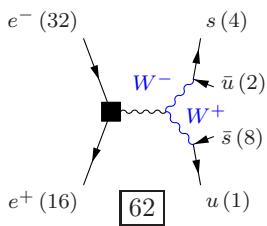
Grove 4

Multiplicity: 2
Resonances: 2
Log-enhanced: 1
t-channel: 1



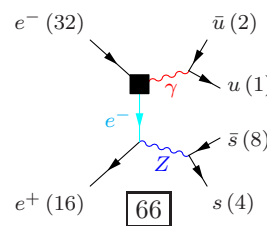
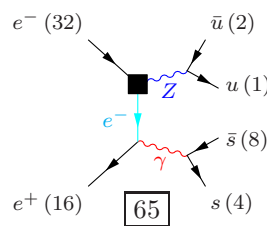
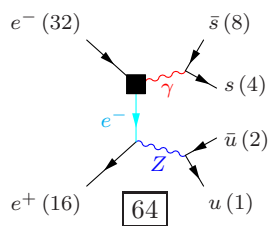
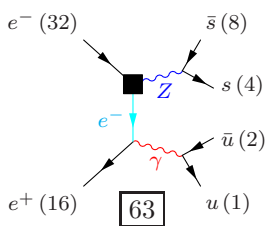
Grove 5

Multiplicity: 2
Resonances: 2
Log-enhanced: 0
t-channel: 0



Grove 6

Multiplicity: 3
Resonances: 1
Log-enhanced: 2
t-channel: 1



Grove 7

Multiplicity: 4
Resonances: 0
Log-enhanced: 3
t-channel: 1

